

SWARTRAX FOR MOTIF



CONTENTS

This package contains the whole Swar Systems sound bank (voices) in the different Yamaha MOTIF formats, over 2000 individual MIDI loops and a Librarian software to browse/audition them.

These items are stored in the following subfolders:

- VOICES :** Contains the voices in the different MOTIF formats: ES, XS and XF.
- SOFTWARE :** Contains both the Swar Librarian software and the Swar Styles Updater utility for assigning styles to soundbank.
- MIDI :** Contains thousands of MIDI loops that can be used as individual arpeggios.

MOTIF VOICES COMPATIBILITY

Almost each MOTIF model accepts a different voice format. Here the ones compatible with each gear flavor:

- MOTIF ES 6/7/8 :** .W7A/.W8A files
- MOTIF XS 6/7/8 :** .X0A files
- MOTIF XF 6/7/8 :** .X3A files
- MOXF 6/8 :** .X3A files

INSTALLING THE VOICES

Please refer to your user manual on how to import these voices.

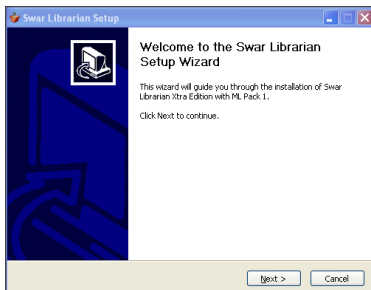
SWARTRAX FOR MOTIF

SWAR LIBRARIAN



Swar Librarian is standalone software that allows you to easily browse and audition a large quantity of loops. Once you find the loops you need you can simply drag & drop them onto any folder as a separate MIDI file.

INSTALLATION ON WINDOWS



Run the libsetup.exe installer located in the Software/Swar Librarian/Windows folder and follow the default instructions.

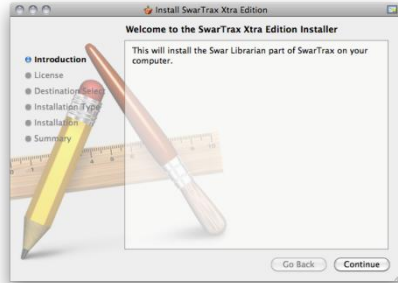
Once the installation completes, go to Start > Programs > Swar Systems and double-click on the Swar Librarian icon for the program to run.

SWARTRAX FOR MOTIF

INSTALLATION ON MAC OS X

Run the LIBSETUP installer located in the Software/Swar Librarian/Mac folder and follow the default instructions.

Once completed, go to Applications > Swar Librarian and double-click on the Swar Librarian icon.



USING THE LIBRARIAN

Once the Librarian is running, you will find all the information on how to use it in the online help that will pop up by clicking on the help icon marked as “?”.



EXPORTED MIDI FILES

If you prefer to browse the files within your keyboard or through a different program, you can also use the whole exported files structure that's included in the MIDI subfolder.

FEATURED INSTRUMENTS

Tabla (3x), Pakhawaj, Dholak, Nagara, Sitar, Sarod, Guitar, Santoor, Sarangi, Harmonium (3x), Bansuri (3x), Shehnai, Bols, Sargam, Tanpura (3x), Manjeera, Dhol, Tudd, Dimdi, Duff, Gunghroo, Tumbak, Tambourines, Duggis, Naal, Chimta, Israj, Banjo, Tumbi, Mridangam (2x), Ghatam, Kanjeera, Morsing, Chende, Dollu, Udukke, Taval, Ghat Singhari, Tamte, Veena, Nadaswaram, Konnakol, Rabab, Surnaii, Mandolin, Tenor Banjo, Khuang, Tutari, Halgi, Pung, Manipuri Dhol, Nishan, Bihu Dhol, Pepa, Daphli, Been, Algozey, Ravanhattha, Khartaal, Surbahar, Violin, Eddaka, Khol, Bells, Ektara, Swarmandal & Bass Dholak