

# SWARTRAX FOR TYROS



## CONTENTS

This package contains the whole Swar Systems sound bank (voices) in the different Tyros formats, a collection of over 200 styles that use these voices, over 2000 individual MIDI loops and 2 software utilities.

These items are stored in the following subfolders:

- VOICES :** Contains the voices in the different Tyros 2 (TVN), 3/4 (UVN) & 5 (PPF) formats
- STYLES :** Contains over 200 styles in both SFF1 (Tyros 2) and SFF2 formats
- SOFTWARE :** Contains both the Swar Librarian software and the Swar Styles Updater utility for mapping the Swar voices in the styles to their right id on your gear.
- MIDI :** Contains thousands of MIDI loops that can be used as individual arpeggios.
- HELP :** Contains additional documents and help files

## INSTALLING THE VOICES AND STYLES

The installation procedure is different on the Tyros 5 than on the previous versions. We have created specific documents for each model, that you can find in the Help subfolder. There are:

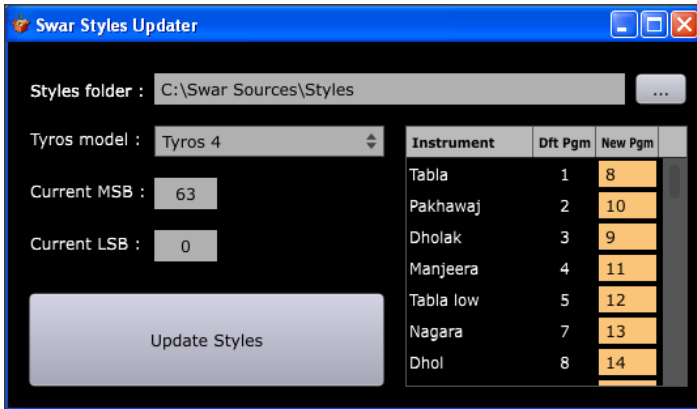
**TYROS 5 :** /Help/TYROS 5 INSTRUCTIONS.pdf

**TYROS 2, 3, 4 :** /Help/TYROS 2-3-4 INSTRUCTIONS.pdf

# SWARTRAX FOR TYROS

## INCLUDED SOFTWARE

### STYLES UPDATER



Each voice loaded on the Tyros is given a unique identifier that is a combination of 3 numeric values: MSB, LSB and Program Nr. On the Tyros 5, the program nr remains the same as in the default Swar lib and only the LSB value changes. On previous Tyros models, the LSB is always 0, and the Program nr is the one you select when importing a voice.

As the included styles are set to default values, we needed a utility to map all the Swar voices in the styles to the values defined on your gear. The Styles Updater does just that. Select the folder containing all your Swar styles, enter the voice ids defined on your Tyros (upper right corner of the voice rectangle), press “Update Styles” and your styles will be assigned to the right instruments.

### Important Note

The Style Updater requires the style files to be stored on a read-write location. If you have purchased a DVD copy of SwarTrax, you must copy the whole Styles folder onto your hard-disk and then run Styles Updater on that copy.

### Controls

Here is a short explanation of the fields and controls displayed:

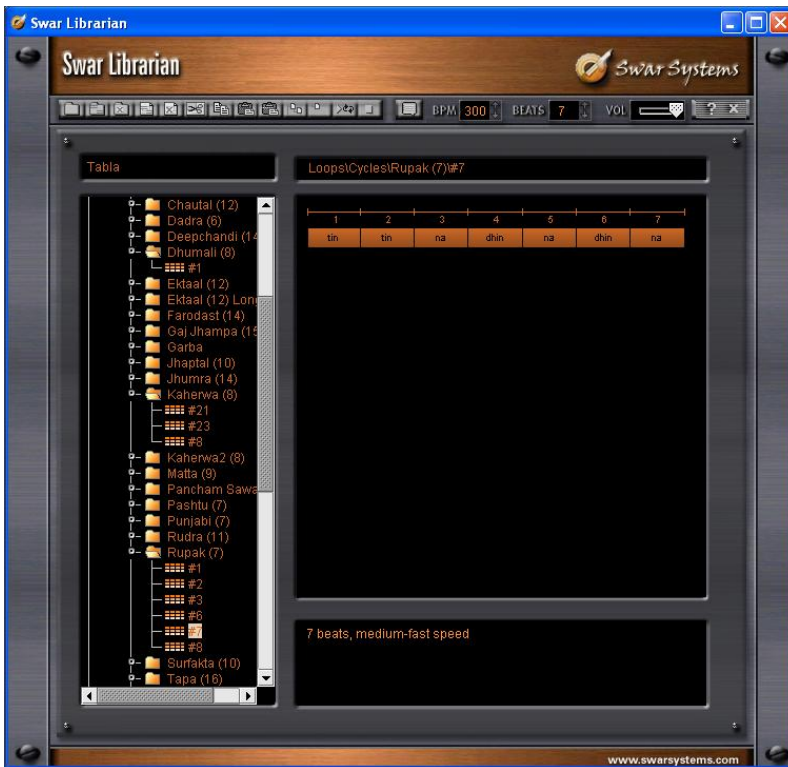
**Styles folder :** This will contain the full path to the “Styles” folder containing ALL your Swar styles. The “...” button to the right lets you browse your disk for that.

**Tyros Model :** Select the model of your Tyros. Tyros 5 lets you only change the LSB, other models let you only change the program nrs.

# SWARTRAX FOR TYROS

- Current MSB/LSB :** Once you select the Styles folder, the utility displays the current MSB/LSB values set in the styles, for information.
- New LSB :** If Tyros 5 was selected, you can specify here the new LSB value (displayed by the Tyros when importing the voices).
- Instruments table:** If an earlier model was selected, you will see a table with all available Swar voices where you can define for each the program nr in which you stored each voice.
- Update Styles :** Once you select the folder and set the new LSB value, click on this button to update all your styles to it. The process shouldn't take more than a few seconds.

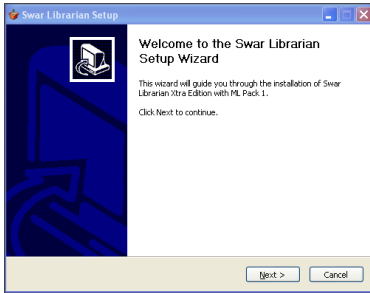
## SWAR LIBRARIAN



Swar Librarian is standalone software that allows you to easily browse and audition a large quantity of loops. Once you find the loops you need you can simply drag & drop them onto any folder as a separate MIDI file.

# SWARTRAX FOR TYROS

## INSTALLATION ON WINDOWS



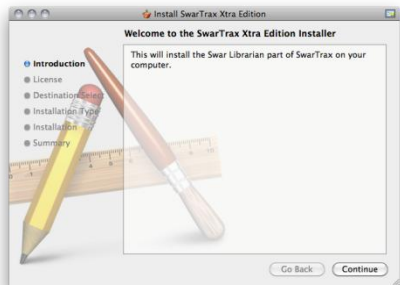
Run the libsetup.exe installer located in the Software/Swar Librarian/Windows folder and follow the default instructions.

Once the installation completes, go to Start > Programs > Swar Systems and double-click on the Swar Librarian icon for the program to run.

## INSTALLATION ON MAC OS X

Run the LIBSETUP installer located in the Software/Swar Librarian/Mac folder and follow the default instructions.

Once completed, go to Applications > Swar Librarian and double-click on the Swar Librarian icon.



## USING THE LIBRARIAN

Once the Librarian is running, you will find all the information on how to use it in the online help that will pop up by clicking on the help icon marked as “?”.



## EXPORTED MIDI FILES

If you prefer to browse the files within your keyboard or through a different program, you can also use the whole exported files structure that's included in the MIDI subfolder.